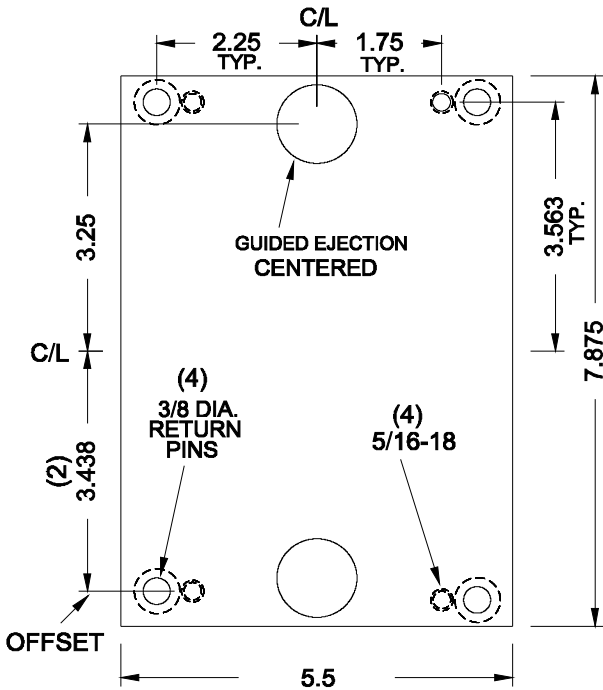


T-EXTREME OPTIONS

FOR 84/90 T-EXTREME INSERTS

Return Pin Machining
The Molding Insert's B-side and ejector plates are machined for return pins and the ejector plates are bolted together.
Includes Return Pins & 5/16-18 cap screws
.500" ejector plates are standard (.360" are optional)
Ejector Plates are centered with insert

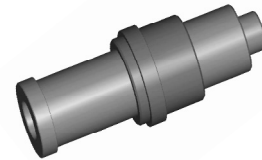
84/90 Return Pin/Guide Layout



Guided Support Pillar Ejection
Available with .500" ejector plates and return pin option only
Includes all machining
(2) Hardened Shoulder Support Pillars (keeps ejector plates captive)
(2) Aluminum Bronze Bushings
(2) 5/16-18 Cap screws

Guided Support Pillar and Aluminum Bronze Guide Bushing

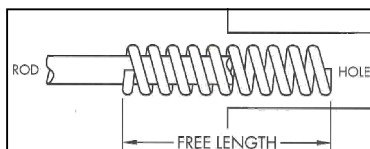
(Detailed print on page 64)



Stripper Plate Conversion
3/4" Stripper Plate includes (4) Shoulder Bushings
(4) Extended Shoulder Pins are installed in the B-side, Shoulder Bushings are installed in the A-side
Note: Pin guide is extended by 3/4" to accommodate stripper plate

Spring Return
Available with .500" ejector plates and return pin option only
B-Plate is counter-bored to a depth of 1.850" and cleared for springs
Includes (4) medium duty 3/8" I.D. X 3/4" O.D. X 3 1/2" Long die springs
Note: Because of compression restrictions this option is only available on TXS and TXL inserts where the B-side is a minimum of 2 1/4" in combination with the guided ejector system or 2 3/4" thick without the guided system.

Spring Return



Stripper Plate

Extended Shoulder Pin

