

“H” & “Double H” Series Interchangeable Molding Inserts

# ORDERING INFORMATION

- “A” & “B” dimensions are supplied .004" to .007" oversize at parting line unless otherwise specified.
- Please specify Quantity & Catalog #
- Optional “A”, “A2”, “B2”, & “B” thickness' available.
- Standard materials for inserts are P-20 Prehard and 4140 Prehard. Other grades available: PX5, H-13 Annealed, 420 Stainless Annealed or Prehard, S-7 Annealed, and ALUMOLD®<sup>1</sup> (comparable to QC-7®<sup>2</sup>)
- **Other materials are available upon request.**

<sup>1</sup>ALUMOLD® is a registered trademark of Alcan/Pechiney.

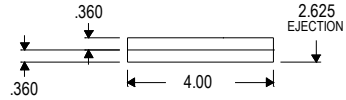
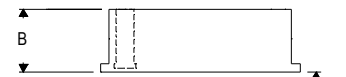
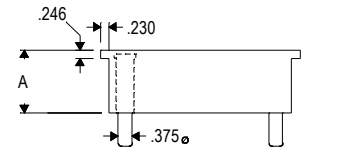
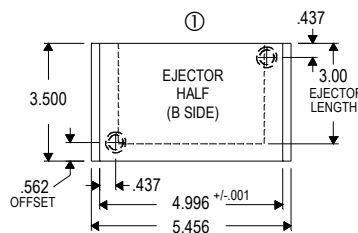
<sup>2</sup>QC-7® is a registered trademark of ALCOA.

**TO PLACE YOUR ORDER CALL: 1-800-832-3993**

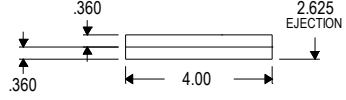
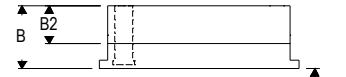
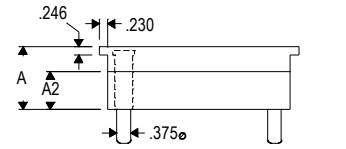
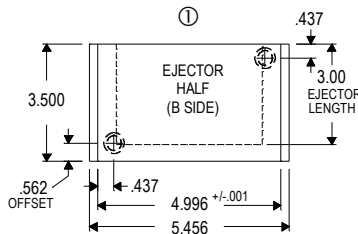
## 5.0 X 3.5 INSERTS

FITS 08/09 H-FRAME and 16/09 DOUBLE H-FRAME

Standard Solid Insert (5.0 X 3.5)			
Catalog #	A	B	
08/09 SSH 221	1.877	1.377	
08/09 SSH 222	1.877	1.877	
08/09 SSH 223	2.377	1.877	



Standard Laminated Insert (5.0 X 3.5)				
Catalog #	A	A2	B2	B
08/09 SLH 281	1.877	0.877	0.877	1.377
08/09 SLH 282	1.877	0.877	0.877	1.877
08/09 SLH 283	2.377	1.377	0.877	1.877



① Clamp Side

Cross Tool & Manufacturing, Inc.  
1-800-832-3993  
crosstool.com