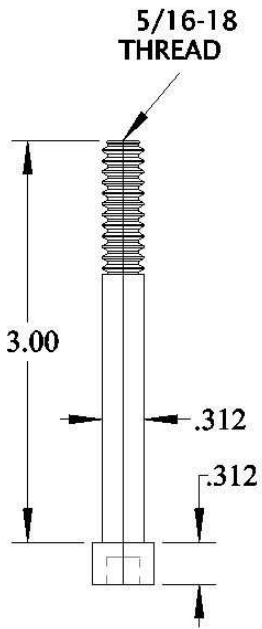
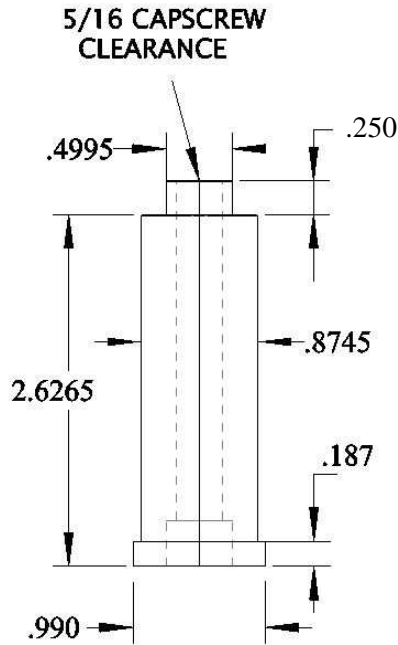


C-08/09 & C-84/90 COMPONENTS

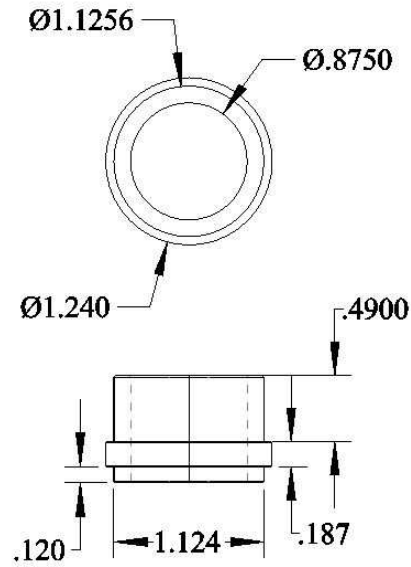
COMPONENTS FOR THE 08/09 & 84/90 GUIDED SUPPORT PILLAR



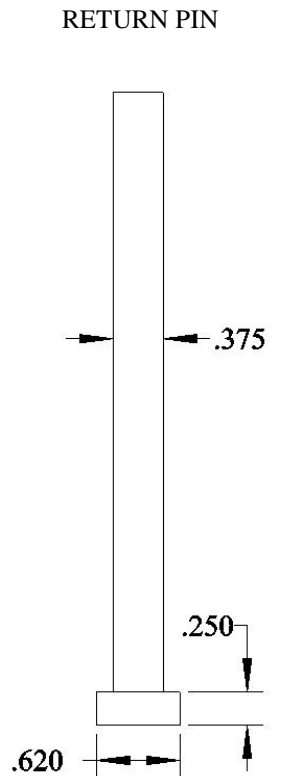
GSP-B-3
5/16-16 X 3 CAPSCREW



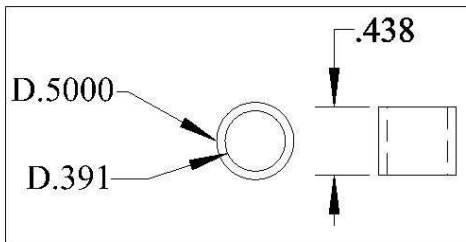
GP-826
GUIDED SUPPORT PILLAR



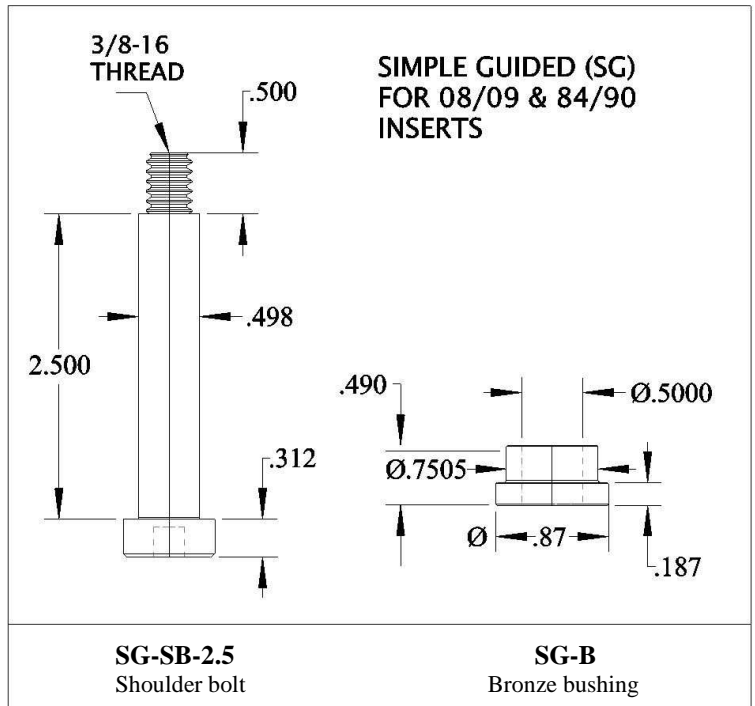
AGB-875
BRONZE BUSHING



EJ-38-L6
EJ-38-L10
Cut to length
available

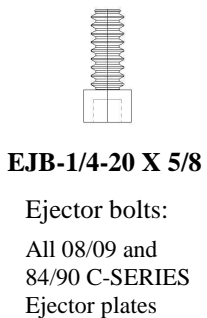


TD-500 Tubular dowel



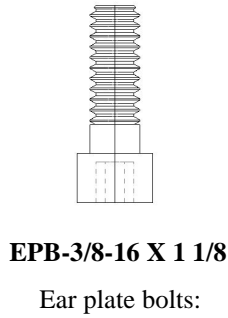
SG-SB-2.5
Shoulder bolt

SG-B
Bronze bushing



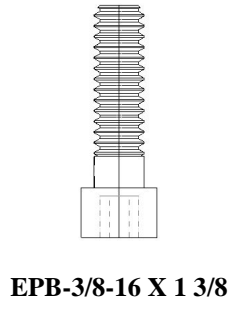
EJB-1/4-20 X 5/8

Ejector bolts:
All 08/09 and
84/90 C-SERIES
Ejector plates



EPB-3/8-16 X 1 1/8

Ear plate bolts:
08/09 C-SLU
08/09 C-TLU
84/90 C-TLU



EPB-3/8-16 X 1 3/8

Ear plate bolts:
08/09 C-SLU
84/90 C-SLU