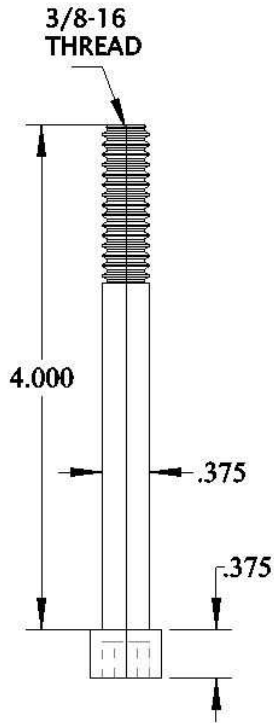
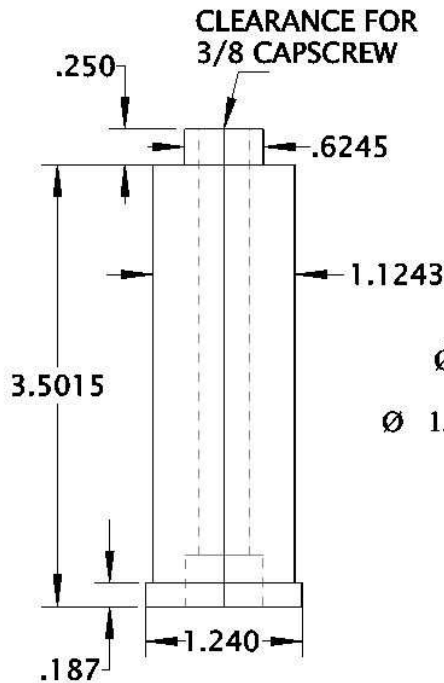


# C-10/12 COMPONENTS

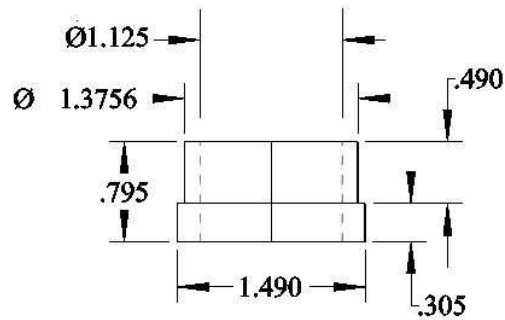
## COMPONENTS FOR THE 10/12 GUIDED SUPPORT PILLAR(GSP)



**GSP-B-4**  
5/16-16 X 3 CAPSCREW

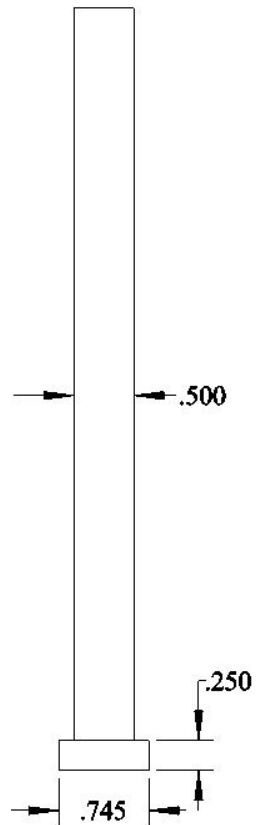


**GP-1.125-35**  
GUIDED SUPPORT PILLAR

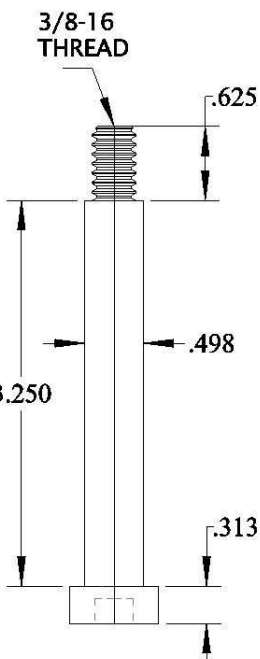


**AGB-1.125**  
BRONZE BUSHING

## RETURN PIN

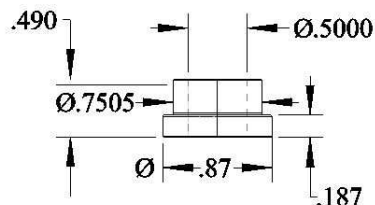


EJ-50-L6  
EJ-50-L10  
Cut to length available

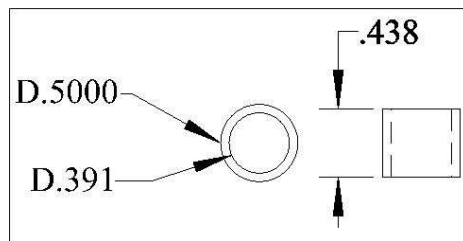


**SG-SB-3.25**  
Shoulder bolt

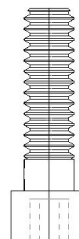
## SIMPLE GUIDED (SG) FOR 10/12 INSERTS



**SG-B**  
Bronze bushing

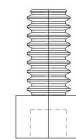


**TD-500** Tubular dowel



**EPB-3/8-16 X 1 3/8**

Ear plate bolts:  
All 10/12 C-SLU &  
C-TLU Ear plates



**EJB-5/16-18 X 5/8**

Ejector bolts:  
All 10/12 C-SERIES  
Ejector plates